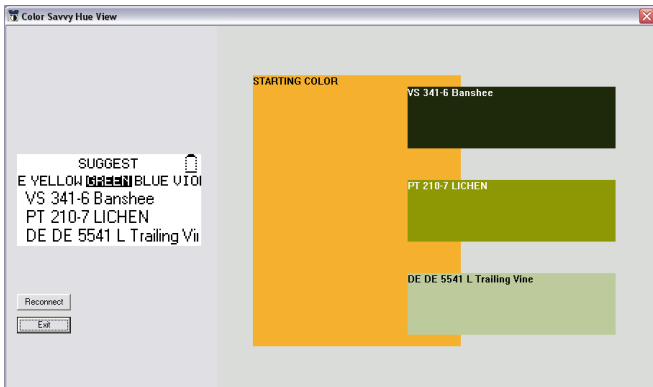


See colors, experiment with colors, pick colors
using your Color-Helper™ color coordinator and

HueView™

Color Visualizer Software



Copyright 2008, Color Savvy Systems Limited
Rev 1108

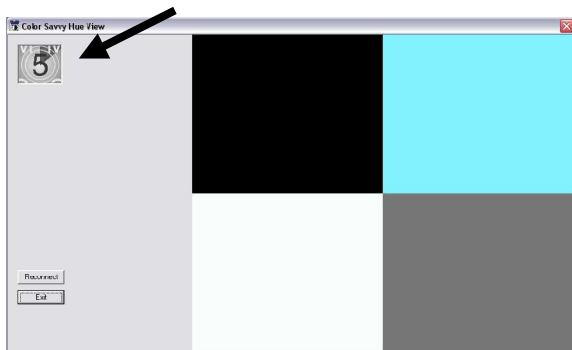
Quick Start

The HueView software lets you see colors that the Color-Helper has listed on its screen.

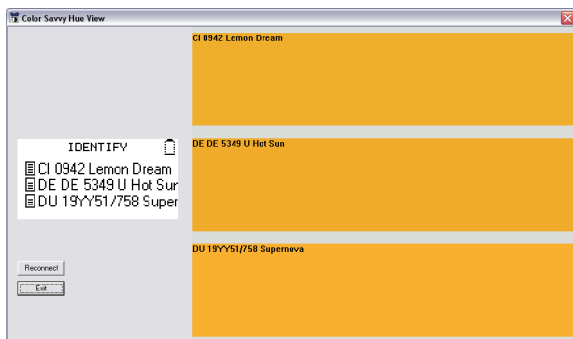
Using HueView is as simple as 1-2-3:

1. Plug the Color-Helper USB Link into a USB port on your PC and into the back of your Color-Helper.
2. Turn on the Color-helper
3. Launch the HueView program.

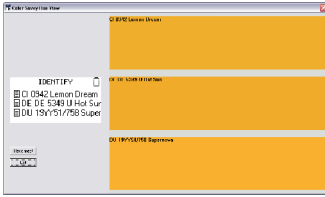
The HueView software will begin by establishing a connection with the Color-Helper. A countdown timer will appear in the upper left corner while this occurs.



Once connected, the HueView software will display a copy of the Color-Helper screen on the left. On the right, swatches of the colors listed on the Color-Helper screen are reproduced. These items will update automatically as the Color-Helper screen changes.

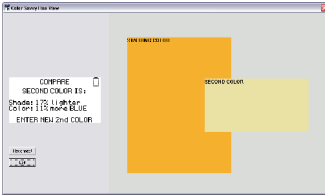


HueView Screens



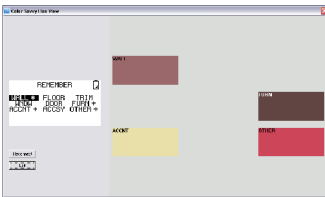
IDENTIFY

Each of the three best matching colors is shown.



COMPARE

The first color measured fills the large background area, the second color appears inside the background.



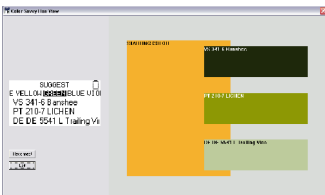
REMEMBER

If a color has been recorded into a labeled memory location (indicated by a “*”), a swatch of that color is shown in the display area.



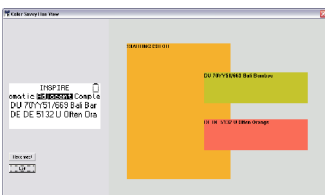
ADVISE

A large swatch of the starting color appears in the display area. If the first and second color coordinate well (the thumbs up icon appears) the two colors will be shown as in the COMPARE screen above, if alternatives are offered, they will be shown as overlaying stripes.



SUGGEST

The starting color fills the large background, with an overlaying stripe for each of the suggestions.

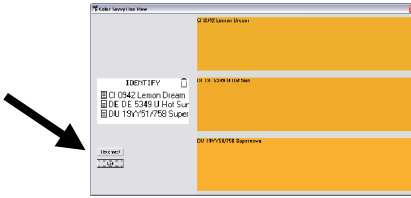


INSPIRE

The starting color fills the large background, and inspirational idea colors are shown as overlaying stripes.

Troubleshooting

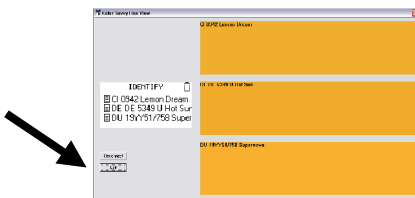
If communication between the PC and the Color-Helper is lost (if, for example, the Color-Helper automatically turns off), make sure the Color-Helper is on and then press the “Reconnect” button on the screen to re-establish the connection.



Occasionally, especially if the Color-Helper is searching for difficult to find colors, the PC may report an error as shown below. Clicking on the “OK” button will clear the error and allow HueView to continue.



Exit HueView by either clicking the red “X” in the upper right corner, or the exit button.



If your Color-Helper was provided with non-standard software and you receive the following message, please contact the factory at customersupport@color-helper.com

